



Rockingham Forest Park

Accessibility Guide for Rockingham Forest Park

reception@rockinghamforestpark.co.uk, 01780432250,
www.rockinghamforestpark.co.uk

Contact for accessibility enquiries: Reception Team



Welcome

Relax and unwind at Rockingham Forest Park. Get back to nature, explore woodland walks and soak up the surroundings in our luxury lodges.

Our accommodation is breathtaking: carefully created to bring you Jacuzzi hot tub lodges in the heart of England. Each lodge is fully equipped to give you a relaxing stay in total comfort, surrounded by nature. (Not all lodges have hot tubs)

The accommodation is on one level, however, there are 3 steps to all the lodges.

At a Glance

Level Access

- The main entrance has level access with a ramp. The ramp is permanent.
- There is level access from the main entrance to:
 - Guests Reception
 - Lodge Lounge
 - Oak Lake Store

Level access bedrooms

- From the main entrance to the bedroom, there is level access.

Visual

- Some parts of the venue have low lighting.

Getting here

Wansford Road
Wansford
PE8 6FR

Travel by public transport

- You can get to Rockingham Forest Park by bus and train.
- In Wansford Village (Robins Field) The bus stop is 1.9 miles / 3.1 km from Rockingham Forest Park.
- The nearest train station is Peterborough Train Station. The train station is 12.4 miles / 20.0 km from Rockingham Forest Park.
- The route from the bus stop is a small country lane and not ideal for walking as the speed limit is 60mph
There is also a train station in Stamford which is 8.4 miles away.

Travel by taxi

- You can get a taxi with Local Peterborough Taxi Firms and Local Stamford Taxi Firms

 *Parking*

- We have a car park. Parking is free.
- Each lodge has a designated parking bay. From the parking to the main entrance, there are 3 steps. There is no ramp and no lift.
- All lodge entrances have a minimum of 3 steps to your door.



Outside a 3-bed lodge



Outside a 1-bed lodge



Outside a 2-bed lodge



Outside a 4-bed lodge

Arrival



Path to the main entrance

- From the street to the main entrance, there is level access.
- There is a permanent ramp.
- The path is 146mm wide, or more.
- The path is sloped.



Main entrance

- The main entrance has level access.
- There is a permanent ramp.
- The door is 176mm wide.
- The main door is sliding and manual.
- There is a step from the ramp to the door and into reception.



Main Entrance

Getting around inside

Visual Impairment - General Information

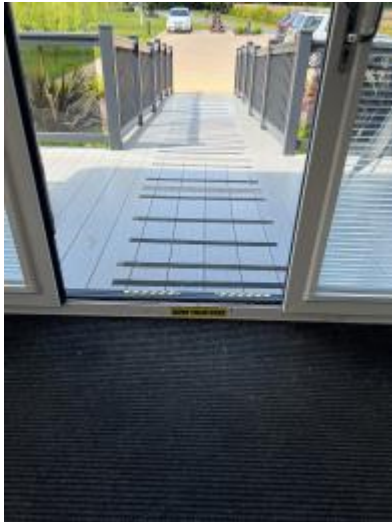
- Some parts of the venue have low lighting.



Low lighting for roads

Guests Reception

- From the main entrance to reception, there is level access. There is a permanent ramp.
- The door is 176mm wide.
- You can sit down at reception.
- There is a step from the ramp to the entrance of reception.
- Our reception is only open Monday 8 am to 5 pm, Thursday 10 am to 2 pm and Friday 8 am to 5 pm.



Step to reception.

Bedrooms

- All bedrooms have windows.
- Bedrooms have ceiling lights, wall lights, bedside lamps, spotlights and natural daylight.
- Lights are LED. Some lights can be controlled independently.
- All bedrooms are non-smoking.
- Some bedrooms have fitted carpets.
- From the main entrance to this area, there is level access.
- We have bathrooms with a separate shower.
- We have bathrooms with a bath and overhead shower. The direction of transfer onto the toilet is to the front only.



1-bed bathtub



2-bed shower



3-bed bathroom



4-bed bathroom

Self-catering kitchen

Lodge Kitchen

- We have an open-plan kitchen.
- From the main entrance to the kitchen, there is level access.
- The route is 66mm wide, or more.
- The door is 66mm wide.
- From the main entrance to the kitchen, there are 3 steps. There is no lift and no ramp.



1-bed kitchen



2-bed kitchen



3-bed kitchen



4-bed kitchen

Lounge

Lodge Lounge

- From the main entrance to the lounge, there is level access. The route is 66mm wide, or more. The door is 66mm wide.



4-bed lounge



3-bed lounge



2-bed lounge



1-bed lounge

 *Bistro*

The Command Post

- There is a ramp to The Command Post
- From the main entrance to the Bistro, there is 1 step. There is no lift and no ramp.



Inside Store



Customer care support

Accessibility equipment

- For a list of more items, please go to

<https://www.themobilityaidscentre.co.uk/>.

- You can hire mobility equipment from The Mobility Aids Centre by calling 01733342242.

Customer care support

- We have an out-of-hours number which is manned by one individual on a rota system.

Guide last updated: 14th May 2024